



A customizable look for  
every curve, for every shape,  
*for* EVERY  
BODY

Actual Natrelle® patients.  
Individual results may vary.

**Natrelle® Breast Implants IMPORTANT SAFETY INFORMATION AND APPROVED USES**

Breast implants are not considered lifetime devices. The longer people have them, the greater the chances are that they will develop complications, some of which will require more surgery.

Breast implants have been associated with the development of a cancer of the immune system called breast implant-associated anaplastic large cell lymphoma (BIA-ALCL). This cancer occurs more commonly in patients with textured breast implants than smooth implants, although rates are not well defined. Some patients have died from BIA-ALCL.

Patients receiving breast implants have reported a variety of systemic symptoms, such as joint pain, muscle aches, confusion, chronic fatigue, autoimmune diseases, and others. Individual patient risk for developing these symptoms has not been well established. Some patients report complete resolution of symptoms when the implants are removed without replacement.

Please see Important Safety Information on following pages, including Boxed Warning.

# EVERYONE

has a story



KATIE, ALEXEA,  
AND DANA

Actual Natrelle® patients.  
Individual results may vary.

## Natrelle® Breast Implants IMPORTANT SAFETY INFORMATION AND APPROVED USES (continued)

### Who can get breast implants?

Natrelle® Breast Implants are approved for the following:

- **Breast augmentation for women at least 22 years old for silicone-filled implants and for women at least 18 years old for saline-filled implants.** Breast augmentation includes primary breast augmentation to increase the breast size and revision surgery to correct or improve the result of a primary breast augmentation
- **Breast reconstruction.** This includes primary breast reconstruction to replace breast tissue that has been removed due to cancer or trauma or that has failed to develop properly due to a severe breast abnormality. This also includes revision surgery to correct or improve the result of a primary breast reconstruction

**KATIE**, model, actress, and yoga instructor decided to undergo a preventative double mastectomy. She chose to have breast reconstruction done at the same time so she could start the process of feeling like herself again. This personal decision was about helping herself get back to feeling like herself as much as possible.

**ALEXEA**, a physician and mother, was diagnosed with stage III breast cancer at 40. She chose a bilateral mastectomy for her treatment and knew right away she wanted breast reconstruction. This personal decision was about helping her feel like herself as much as possible.

**DANA** was diagnosed with triple-positive breast cancer in her late 20s. She underwent a bilateral mastectomy and breast reconstruction. Dana got involved with young survivor support groups early on and was so inspired and uplifted by these women and knew that she wasn't alone. She now dedicates her life to spreading awareness about breast cancer and creating bras for women who've had mastectomies.



Patient Stories  
**HEAR** what others are



**SAYING**

### Who should NOT get breast implants?

Breast implant surgery should NOT be performed in:

- Women with active infection anywhere in their body
- Women with existing cancer or precancer of their breast who have not received adequate treatment for those conditions
- Women who are currently pregnant or nursing

### What should I tell my doctor?

Tell your doctor if you have any of the following conditions, as the risks of breast implant surgery may be higher:

- Autoimmune diseases (eg, lupus and scleroderma)
- A weakened immune system (eg, taking medications to decrease the body's immune response)
- Planned chemotherapy or radiation therapy following breast implant placement
- Conditions or medications that interfere with wound healing and blood clotting

Please see additional Important Safety Information on following pages.



Everyone deserves the chance to express themselves in their truest form. You deserve to have a customized look that feels uniquely you.

Actual Natrelle® patient.  
Individual results may vary.



Actual Natrelle® patient.  
Individual results may vary.

## Natrelle® is committed to supporting the breast cancer community and your own unique journey.

Breast surgery is a personal choice. If you're considering breast reconstruction after mastectomy, Natrelle® offers the largest range of breast implant options to give a customized look for every curve, for every shape, for every BODY.

Natrelle®'s commitment to you is backed by 35 years of excellence and innovation in cosmetic and reconstructive surgery with the highest manufacturing and safety standards.



OF EXCELLENCE AND  
INNOVATION IN COSMETIC  
AND RECONSTRUCTIVE  
SURGERY

### Natrelle® Breast Implants IMPORTANT SAFETY INFORMATION AND APPROVED USES (continued)

#### What should I tell my doctor? (continued)

- Reduced blood supply to breast tissue
- Clinical diagnosis of depression or other mental health disorders, including body dysmorphic disorder and eating disorders
- Those with a diagnosis of depression or other mental health disorders should wait for resolution or stabilization of these conditions prior to undergoing breast implantation surgery

#### What else should I consider?

- There is a Boxed Warning for breast implants. Please see bold text at beginning

- Many changes to your breasts following implantation are irreversible. If you later choose to have your implants removed and not replaced, you may experience dimpling, puckering, wrinkling, or other cosmetic changes, which may be permanent
- Breast implantation is likely not a one-time surgery. The longer implants are in place, the greater the potential risk for complications. You will likely need additional surgeries on your breasts due to complications or unacceptable cosmetic results. Thus, you should also consider the complication rates for later (revision) surgery since you may experience these risks in the future
- Cancer treatments and surgery will affect the outcome and timing of breast reconstruction
- Breast implants may affect your ability to breastfeed, either by reducing or eliminating milk production

Please see additional Important Safety Information on following pages.



# EVERYONE

deserves support + care  
from a team

## BREAST SURGEON

Removes the cancer through a lumpectomy or mastectomy and/or other treatments. If you're thinking about breast reconstruction, discuss it with your breast surgeon first. It may impact how they perform your mastectomy.

## YOU

Together with your breast surgeon and plastic surgeon, you'll talk about your options and create a plan that's right for you.

## PLASTIC SURGEON

Reconstructs your breasts using one of several methods. Reconstruction with breast implants is just one option. It's important to work with a plastic surgeon who specializes in the technique you want.

### THE WOMEN'S HEALTH AND CANCER RIGHTS ACT OF 1998

*The Women's Health and Cancer Rights Act of 1998 ensures that if your health insurance covers a mastectomy, it must also cover breast reconstruction and surgery to the unaffected breast for a symmetrical outcome.*

*Contact your insurance company early on in the decision-making process so you know what's covered under your plan and for how long.*



Actual Natrelle® patient.  
Individual results may vary.



#### **Natrelle® Breast Implants IMPORTANT SAFETY INFORMATION AND APPROVED USES (continued)**

##### **What else should I consider? (continued)**

- Rupture of a silicone-filled breast implant is most often silent. Even if you have no symptoms, you should have your first ultrasound or MRI at 5 to 6 years after your initial implant surgery and then every 2 to 3 years thereafter regardless of whether your implants are for augmentation or reconstruction. If you have symptoms of or uncertain ultrasound results for breast implant rupture, an MRI is recommended. Additional imaging may be required depending on your medical history and status. The health consequences of a ruptured silicone gel-filled breast implant have not been fully established
- Routine screening mammography for breast cancer will be more difficult, and implants may rupture during the procedure. Perform self-examination every month for cancer screening and ask your surgeon to help you distinguish the implant from your breast tissue. Lumps, persistent pain, swelling, hardening, or changes in implant shape should be reported to your surgeon and possibly evaluated with imaging

**Please see additional Important Safety Information on following pages.**



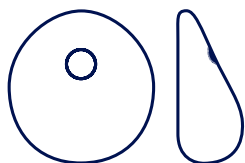
# KNOW

## Your Options

There are different techniques to consider when it comes to breast reconstruction. Remember to discuss all options with your plastic surgeon to decide what's right for you.

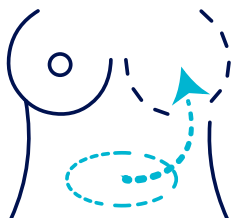
### IMPLANT-BASED RECONSTRUCTION

This technique uses a saline or silicone implant to reconstruct your breast.



### BODY TISSUE (AUTOLOGOUS) RECONSTRUCTION

This technique uses your own tissue from another area of your body to create a breast form.



### HYBRID RECONSTRUCTION

This technique involves using your own tissue from another part of your body, plus an implant.



Actual Natrelle® patient.  
Individual results may vary.

### No reconstruction: CHOOSING FLAT

Many women choose to have some type of breast reconstruction, while some women don't want any additional surgery or breast reconstruction. No reconstruction is often called "going flat" or "living flat" by many doctors and women with breast cancer.

# Breast Reconstruction YOUR WAY



Very little  
fullness on top



Full look with slight  
roundness on top



Fuller look with more  
roundness on top



Fullest look with a very  
rounded look on top

Actual *Natrelle*® patients.  
Individual results may vary.

Your body has a story to it—now it's time to write your part. When it comes to breast reconstruction, you have a say in how you'll look. Whether it's getting back to the look you had pre-mastectomy or transforming into who you are now, the choice is yours.

***Natrelle*® offers options to help you create a look that feels right for you. Be sure to discuss your aesthetic goals with your plastic surgeon.**

## ***Natrelle*® Breast Implants IMPORTANT SAFETY INFORMATION AND APPROVED USES (continued)**

### **What are key complications with breast implants?**

Key complications include reoperation, implant removal with or without replacement, implant rupture with silicone-filled implants, implant deflation with saline-filled implants, and capsular contracture (severe scar tissue around the implant). Other complications include breast pain, swelling, asymmetry, wrinkling/rippling, implant malposition nipple complications, hypertrophic scarring, and implant palpability/visibility.

Talk to your doctor about other complications.

**91%**  
of primary breast  
reconstruction patients  
were satisfied with their  
*Natrelle* INSPIRA® implants  
10 years after surgery.\*

\*Patient satisfaction based on 43 primary reconstruction patients using round implants in the Allergan® core study (67.4% definitely satisfied and 23.3% somewhat satisfied).

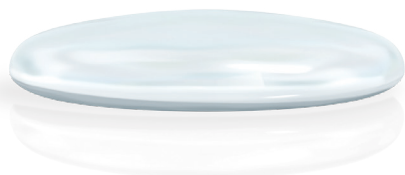
For more information, see the patient brochures at [www.allergan.com/products](http://www.allergan.com/products).

To report a problem with *Natrelle*® Breast Implants, please call Allergan® at 1-800-624-4261.

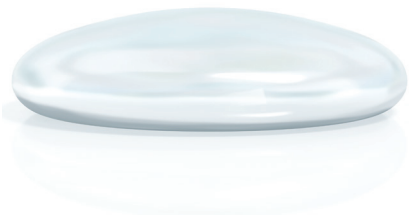
The sale and distribution of *Natrelle*® Breast Implants is restricted to licensed physicians who provide information to patients about the risks and benefits of breast implant surgery.

Please see additional Important Safety Information on following pages.

# Customized for YOU



**LOW**  
110 cc–610 cc



**LOW PLUS**  
125 cc–640 cc



**MODERATE**  
140 cc–755 cc

## **Natrelle® 133S Tissue Expanders Important Information** **Approved Uses**

Natrelle® 133S Tissue Expanders are approved for breast reconstruction following mastectomy, treatment of underdeveloped breasts, and treatment of soft tissue deformities.

## **IMPORTANT SAFETY INFORMATION**

### **Who should NOT get tissue expanders?**

Do not use if you:

- Already have implanted devices that would be affected by a magnetic field
- Have tissue unsuitable for expansion
- Have an active infection or a residual gross tumor at the expansion site.
- Are undergoing adjuvant radiation therapy
- Have a physiological condition (eg, obesity, smoking, diabetes, autoimmune disease, hypertension, chronic lung or severe cardiovascular disease, or osteogenesis imperfecta) or use certain drugs (including those that interfere with blood clotting or affect tissue viability) that may result in a high risk of surgical and/or postoperative complications

Finding your customized look means having options. And who doesn't like options? *Natrelle®* ensures everybody receives a customized look by being the **ONLY** breast implant brand to offer 5 implant projections and 3 gummy gel levels. With these options, the *Natrelle* INSPIRA® collection has a total of 300 implants—the most in the market—to choose from.

**You deserve a look made just for you.**

## **5 Projection Options**

### **ENDLESS POSSIBILITIES**



**FULL**  
180 cc–770 cc



**EXTRA FULL**  
200 cc–800 cc

### **What else should I consider?**

- *Natrelle®* 133S Tissue Expanders should NOT be used in patients who already have implanted devices that would be affected by a magnetic field
- Active infection anywhere may increase risk of infection around the tissue expander. Certain infections may require premature removal of the device
- *Natrelle®* 133S Tissue Expanders are temporary devices and are not to be used for permanent implantation or beyond 6 months. Tissue expansion in breast reconstruction typically requires 4 months to 6 months

### **What are possible complications?**

Deflation, tissue damage and/or appearance of the implant through the skin, infection, unwanted shape, unintended blood or fluid collection, capsular contracture (tightening of scar tissue that causes the breast to harden), premature device removal, bone/pain/sensation changes, and inflammation.

**For more information, please visit [www.allergan.com/products](http://www.allergan.com/products). To report a problem with *Natrelle®*, please call Allergan at 1-800-433-8871.**

*Natrelle®* 133S Tissue Expanders are available by prescription only.

**The sale and distribution of *Natrelle®* 133S Tissue Expanders is restricted to licensed physicians.**

Please see additional Important Safety Information on previous pages.



# YOUR SAFETY OUR PRIORITY

Each *Natrelle*® implant is made by hand and goes through an extensive period of rigorous testing and quality checking to ensure your safety.



**State-of-the-art facility** designed specifically to produce breast implants



Each implant goes through an intensive **12-day production**



**Multiple quality checks** through the manufacturing process

The #1 surgeon-selected and the most requested implant brand in the US.†



*Natrelle*® is dedicated to providing you with quality, consistency, and transparency. The ***Natrelle*® Breast Implant Collection** includes:

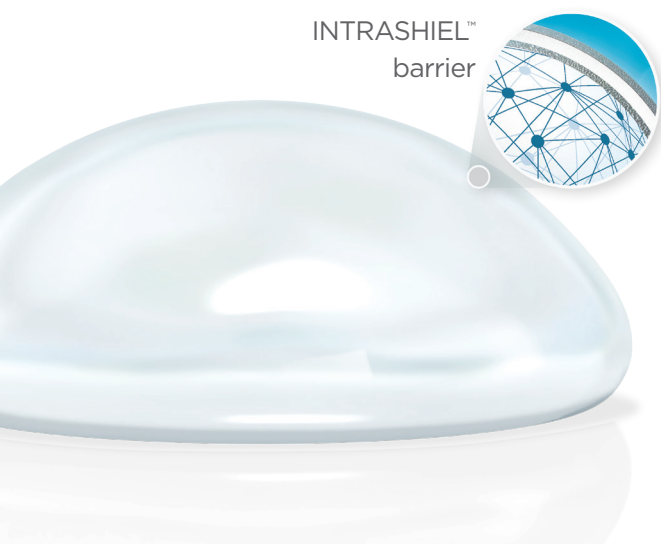
- Cohesive silicone gel that stays in place
- Higher gel fill ratio
- Smooth-surface options, always
- Thick protective shell

†*Natrelle*® November 2023, Plastic Surgery Aesthetic Monthly Tracker Breast Implants, Tissue Expanders, Surgical Scaffolds, & Fat Transfer.

Actual *Natrelle*® patients.  
Individual results may vary.

# A STRONG SHELL

For Your Gel



Implant design and integrity are essential for creating a look that feels uniquely you.

The *Natrelle* INSPIRA® Breast Implants are engineered with a cohesive gel and a robust shell to ensure they hold their fullness and upper volume while maintaining a soft feel. *Natrelle* INSPIRA® Breast Implants are surrounded by patented shell technology and an INTRASHIEL™ barrier layer designed to keep your gel in place.†

†Significance inside the body has not been established.

# SOFT

To the Touch

*Natrelle* INSPIRA® offers three levels of gummy to choose a feel that's uniquely you and create your desired shape.

*How gummy do you want to go?*

It's not just about the look, it's about the feel. Gummy refers to the cohesivity, or consistency, of the silicone gel in *Natrelle* INSPIRA® Breast Implants. Whatever feel you're trying to achieve, *Natrelle* INSPIRA® is the only implant brand that offers three gummy gel levels ranging from soft, softer, to softest.







## The Natrelle® ConfidencePlus® **WARRANTY PROGRAM** Coverage for your Breast Implants

You can choose **ANY** size and style of *Natrelle* INSPIRA® Breast Implants for replacement in the case of any covered event.



### GEL WARRANTY

**FREE** coverage and automatic enrollment

#### **Rupture**

- Implant replacement: Lifetime for both affected and contralateral implants
- Out-of-pocket financial assistance: Up to \$3,500 for 10 years

#### **Capsular contracture Baker Grade III/IV**

- Implant replacement: 10 years for both affected and contralateral implants

Scan here to learn more  
about our warranty program.



Actual *Natrelle*® patient.  
Individual results may vary.

Please see additional Important Safety Information on previous pages.





## IMPLANT-BASED BREAST RECONSTRUCTION

Actual Natrelle® patient.  
Individual results may vary.

## TWO-STAGE is the most common type of implant-based reconstruction

**Two-stage breast reconstruction** completes the process over two stages using a tissue expander. A tissue expander is placed in immediately after the mastectomy to be later replaced with an implant. While this breast reconstruction technique requires at least two separate surgeries, it does allow for the patient to find their desired size due to the tissue expander being expanded slowly over time. Be sure to talk to your plastic surgeon about all your reconstruction options and which one is right for you.

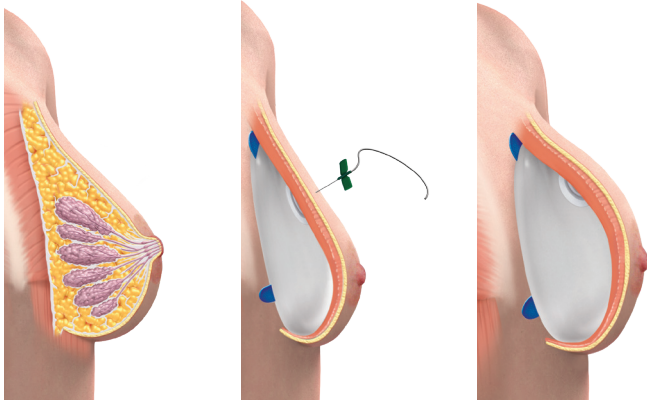
Another potential option for implant-based breast reconstruction is Direct-to-Implant (DTI) breast reconstruction. It involves placing the implant immediately after the cancer and breast tissue have been removed. Not every patient is a candidate, so be sure to speak with your breast care team to see if this is an option for you.

# STAGE I

## *Tissue Expander: Preparing Your Tissue*

### Here's what to expect:

After your mastectomy, a tissue expander will be inserted and slowly expanded over a period of one to six months. A tissue expander inflates like a balloon and is used to recreate a breast pocket to achieve the desired size for the implant to be placed.



Before  
mastectomy

Placed tissue  
expander

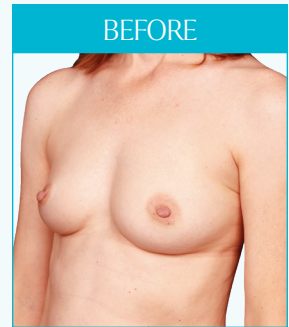
Inflated tissue  
expander

*Natrelle* INSPIRA® 133 Series Tissue Expanders are the **#1 plastic surgeon-selected**<sup>†</sup> tissue expander and are designed to work with *Natrelle* INSPIRA® Breast Implants

<sup>†</sup>*Natrelle*® November 2023, Plastic Surgery Aesthetic Monthly Tracker Breast Implants, Tissue Expanders, Surgical Scaffolds, & Fat Transfer.

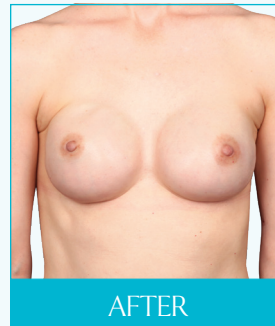


BEFORE



BEFORE

### Mastectomy



AFTER



AFTER

### Inflated tissue expander

*Natrelle* INSPIRA® 133 Series Tissue Expanders

Photos provided by Dr Allen Gabriel.  
Individual results may vary.

## *Did you know?*

*A tissue expander can be placed at the time of mastectomy or at a later time. Make sure you speak to your breast care team about all of your options.*



# STAGE 2

## Exchange Surgery: Placing Your Implant

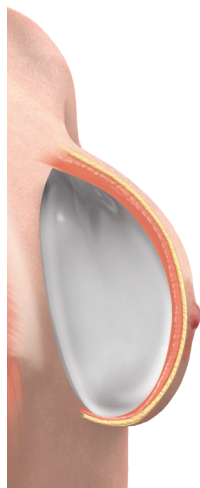
Now that your desired size has been achieved, the tissue expander will be removed and replaced with an implant.

A breast implant can be placed under the chest muscle (subpectoral) or over the chest muscle (prepectoral).

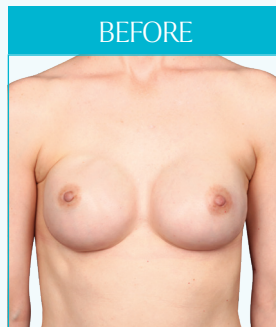
**Be sure to talk to your plastic surgeon about which technique is right for you.**



Inflated tissue expander

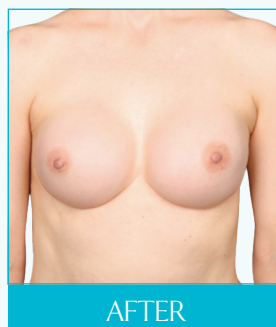


Placed breast implant



**Inflated tissue expander**

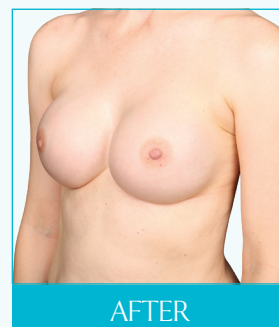
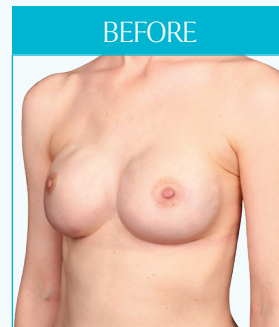
*Natrelle INSPIRA® 133 Series Tissue Expanders*



**Placed breast implant**

Photos provided by Dr Allen Gabriel.  
**Individual results may vary.**

*Natrelle INSPIRA® Cohesive*

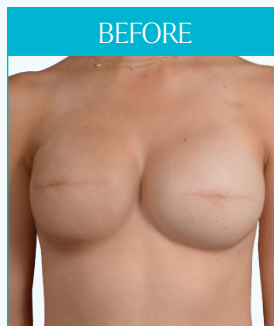
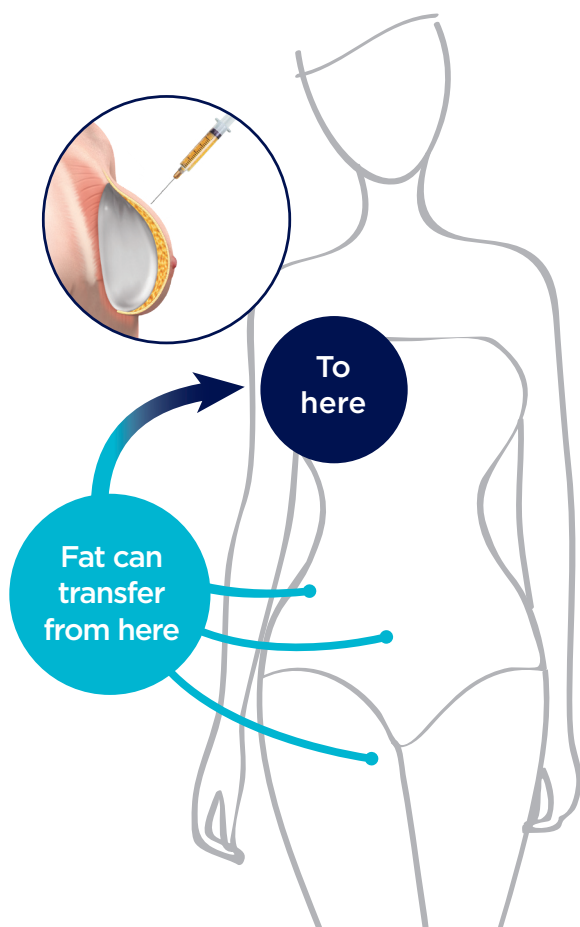




# FAT TRANSFER

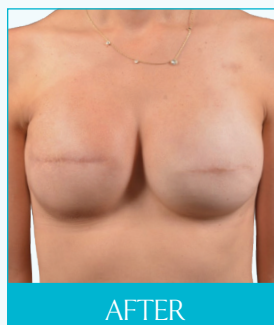
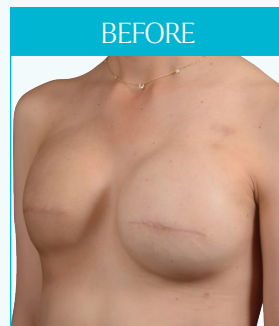
Your plastic surgeon may suggest a fat transfer as part of your implant-based reconstruction.

Fat transfer allows your plastic surgeon to transfer fat from one area of your body to your breasts to help fill in contour irregularities or slightly increase volume.



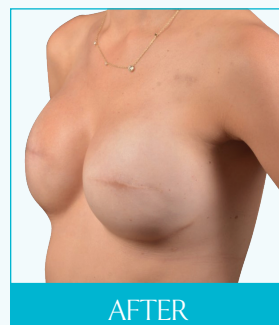
## Breast reconstruction

*Natrelle INSPIRA® Cohesive*



## Fat transfer added

Photos provided by Dr Jacob Unger.  
Individual results may vary.



# 60%

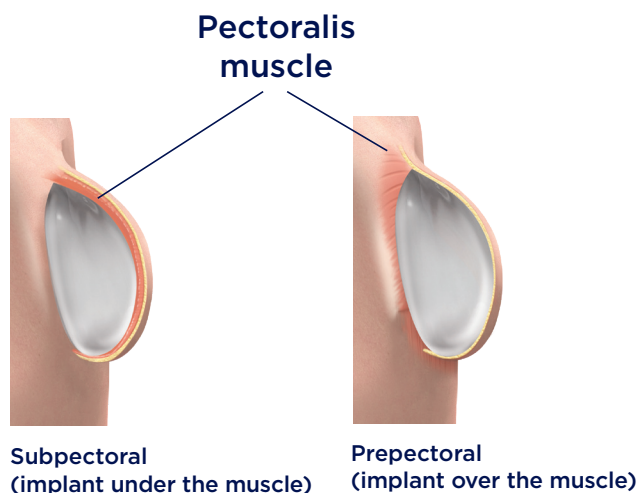
In a survey of 456 US surgeons, more than 60% reported using fat transfer in breast reconstruction procedures.

# REVISION

Changes can occur over time, and breast reconstruction revision surgery may be an option for you if:

- You have the desire to change your breast implant size.
- You experience weight loss, weight gain, pregnancy, or breastfeeding, and it negatively affects the appearance of your breasts.
- Animation deformity occurs.

**What is animation deformity?** When breast implants are placed under the chest muscle (subpectoral), your muscle may start to pull on your tissue and cause unwanted or unnatural movements; this is called animation deformity. If this is the case, your plastic surgeon may recommend a reconstruction revision surgery to correct this by moving your breast implants over the chest muscle (prepectoral).



Relaxed



Flexed

## Breast reconstruction with subpectoral placement and fat transfer

*Natrelle INSPIRA® Responsive*



Relaxed



Flexed

## Revision reconstruction to prepectoral placement

*Natrelle INSPIRA® SoftTouch*

Photos provided by Dr Allen Gabriel.  
**Individual results may vary.**

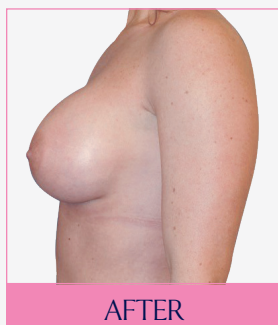
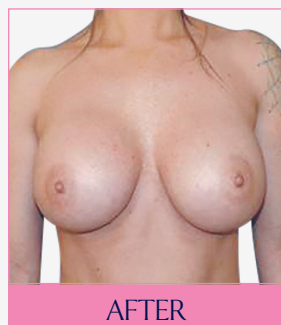
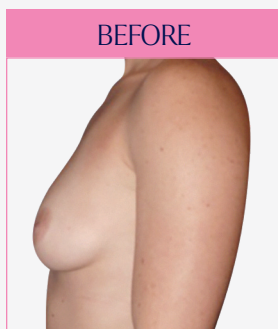
# These women CHOSE THEIR LOOK with *Natrelle* INSPIRA®

Actual *Natrelle*® patients.  
Individual results may vary.



**FULLEST LOOK**  
with a very  
rounded top

Breast Reconstruction With  
Prepectoral Placement and Fat Transfer



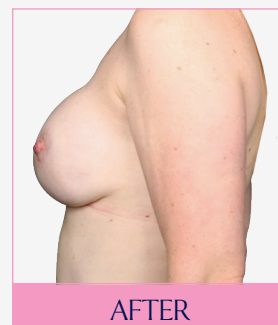
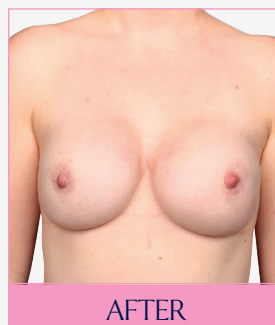
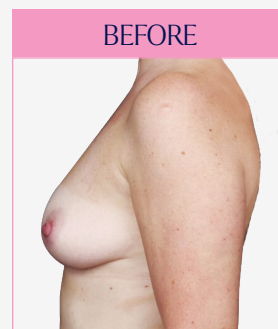
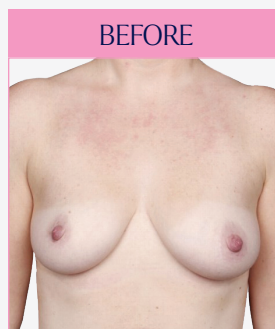
*Natrelle* INSPIRA® Cohesive

Photos provided by Dr Ritu Chopra.  
Individual results may vary.



**FULLER LOOK**  
with more  
roundness on top

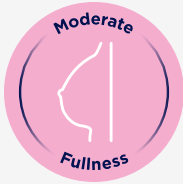
Breast Reconstruction With  
Prepectoral Placement and Fat Transfer



*Natrelle* INSPIRA® Cohesive

Photos provided by Dr Allen Gabriel.  
Individual results may vary.





## FULL LOOK with slight roundness on top

Breast Reconstruction With  
Subpectoral Placement and Fat Transfer



*Natrelle* INSPIRA® Cohesive

Photos provided by Dr Elizabeth Kim.  
Individual results may vary.



## VERY LITTLE fullness on top

Breast Reconstruction With  
Prepectoral Placement



*Natrelle* INSPIRA® SoftTouch

Photos provided by Dr Maurice Nahabedian.  
Individual results may vary.



Actual *Natrelle*® patients.  
Individual results may vary.

Your final look depends on many factors, including how much breast tissue you have after your mastectomy. Your surgeon can help you choose the best option based on your needs, wants, unique body structure, and more.

Please see additional Important Safety Information on previous pages.

## QUESTIONS TO ASK

Refer to this helpful list of questions during your consultation with your plastic surgeon.

What are the different options for reconstructing my breasts?

Do I need to decide right now if I want to have breast reconstruction, or can I wait?

Can implant-based reconstruction interfere with my cancer treatment?

Will Natrelle INSPIRA® Breast Implants give me the fullness and volume I want?

Can I see before-and-afters of patients who had similar aesthetic desires?

Is getting back to a pre-mastectomy appearance an option for me?

Will implants alone give me the look I want or will I need an additional procedure?

How do I prepare for breast reconstruction surgery?

I am having a unilateral mastectomy. Will surgery be required on my other breast as well? If so, when will it be done?

Will I need tissue expanders?

What are the risks and complications associated with breast implants, breast reconstruction surgery, and tissue expanders?

Will my implants go over or under the muscle?

Will I need my nipples reconstructed? If so, what are my options?

Will my insurance cover breast reconstruction surgery or pay for any additional surgery that may be required?

Is there warranty coverage for my implants?

“DO YOUR RESEARCH  
AND DON'T BE  
AFRAID TO ASK  
YOUR SURGEON  
ANYTHING.”



Actual Natrelle® patient.  
Individual results may vary.

What can I expect during my recovery?

On average, when are patients able to resume normal activities?

What is the long-term care of my breast implants?

What is the lifespan of my implants?

What are the long-term complications that may occur with breast implants?

What changes can I expect over time with my implants?

Will the look of my reconstructed breasts change if I lose or gain weight?

What is maintenance like for breast implants?

How often do I need checkups?

How do I perform my monthly breast exam after implants?



*Natrelle*

A look that's  
**COMPLETELY  
YOU**

## *Natrelle*® CARES



*Natrelle*® is dedicated to partnering with organizations that support women who have been affected by breast cancer. Scan here to learn more about *Natrelle*® Cares.



Actual *Natrelle*® patient.  
Individual results may vary.



natrelle.com  
@NatrelleBreastReconstruction

*Natrelle*

**Allergan  
Aesthetics**  
an AbbVie company

© 2024 AbbVie. All rights reserved. NATRELLE and its design are trademarks of Allergan, Inc., an AbbVie company. All other trademarks are the property of their respective owners.  
Natrelle.com US-PRM-00192 03/24 23-88